

“We’re expecting thousands of wine lovers from around the Bay to join us. It’s a one-of-a-kind opportunity to meet winemakers, growers, musicians and local craft artisans.”

**Chris Chandler**, executive director, Livermore Valley Winegrowers Association



STEVEN F. KELLY

Winegrower’s barn holds equipment used in maintaining this expanse of vineyards in south Livermore.

## Harvest time in Valley

Two-day wine celebration starts Sunday offering tours and tastings

**By JEB BING**

The 27th annual Harvest Wine Celebration gets under way at noon Sunday for a two-day opportunity to visit winery open houses and sample some of the best wines in the country.

A total of 43 wineries will each host a slate of events that include wine tastings, seminars, entertainment, foods, arts and crafts. Well-known local bands have been commissioned to play during the two-day event with music from country and rock to jazz and reggae.

“It’s a wine country weekend event with a lot of history and tradition,” said Chris Chandler, executive director of the Livermore Valley Winegrowers Association. “It celebrates the annual winegrape harvest, the busiest time of



JAY FLACHSBARTH

Russ Miller pours specialty wine of the day at Wente Vineyards tasting room.

year in all wine regions.”

“We’re expecting thousands of wine lovers from around the Bay to join us,” she added. “It’s a one-of-a-kind opportunity to meet winemakers, growers, musicians and local craft artisans.”

The wineries are located in Pleasanton, Livermore and Castro Valley. Visitors can park and start their adventure at any winery, or at the main transportation hub in Robertson Park in Livermore, and travel on shuttle buses between participating wineries.

This annual celebration of the grape harvest takes place from noon to 5 p.m. Sunday and on Monday, Labor Day. Tickets are \$50 in advance for a two-day pass or \$55 if purchased on the first day of the event. A Monday-only ticket costs \$45.

Continued on **PAGE 7**

## Dynamic Dublin a tribute to mayor

Termed out, Lockhart reflects on city, Tri-Valley accomplishment

**By JEB BING**

Once an undistinguished step-sister to the fast growing neighboring cities of Pleasanton and Livermore in the last half of the 20th century, Dublin today is a retail, entertainment and smart housing center that is being recognized nationally for municipal leadership in the 21st century.

Much of the credit goes to Mayor Janet Lockhart who leaves office Dec. 2 and to her predecessor, former mayor and State Assemblyman Guy Houston (R-15th), who helped steer Dublin toward the growth and economic success it’s seeing today.

In fact it was Houston who persuaded Lockhart to run for a City Council seat in 1996. She had worked hard as a community volunteer to back Measure B, which won voter approval for annexing an unincorporated tract of land called East Dublin. The area, where much of the city’s recent growth has occurred, includes land from Dougherty Road east to Doolan Canyon, from I-580 to the Contra Costa County line.

“I thought that land would be important to the future of Dublin and worked hard to assemble a citizens’ campaign to support the council’s effort to annex it,” Lockhart recalled. “That got me thinking politically and looking at other ways to support my community. The council was the next step.”

Politics and ballot-box campaigns were far from the thinking of Lockhart when she and her husband Steve moved to Dublin in 1972 to raise their four children, Wendy, Brian, Karen and Jennifer. There were pitfalls ahead. Jennifer, “who would be 36 now,” Lockhart said, was diagnosed with a brain tumor when she was 12 years old and was just starting at Wells Middle School. Doctors at UC San Francisco Medical Center gave her only a short time to live, but the Lockharts prevailed, vowing not to let her die in a hospital room. They

Continued on **PAGE 3**

# Take two: Now we need your feedback to create a better paper

It's a work in progress, and we need your help.

Many thanks to everyone who provided input on the first edition of TriValley Views when it published in May. We received favorable comments on the calendar and the Zone 7 story, the delivery method and the Web site, and unfavorable comments on the size and type of newsprint and quantity of news stories.

Your feedback was taken seriously, and you now see the result of the effort. But we are still refining the publication and will continuously seek your input. I encourage you to visit [www.trivalleyviews.com](http://www.trivalleyviews.com) and tell us what you like, what you don't like and what you would like to see.

One other comment echoed from Dublin to Pleasanton to Livermore was that you want more—and more often. The TVV staff is diligently working toward that goal. To this end, I invite you to participate in the Town Square forum on [TriValleyViews.com](http://TriValleyViews.com), and visit often as we keep you posted on news in the Valley.

If you would like to contribute to TriValleyViews or [TriValleyViews.com](http://TriValleyViews.com) with news, a column, photos or the like, email [editor@trivalleyviews.com](mailto:editor@trivalleyviews.com), or post to the Town Square forum on the Web site.

## PUBLISHER'S NOTE



BY GINA CHANNELL-ALLEN

While you're there, scroll to the bottom of the page and take part in our poll asking: *Should \$79 million be spent to build a 1,800-seat regional theater in Livermore?*

We also have a forum where visitors can voice their opinions on: *Whose responsibility is Springtown Golf Course, and is keeping it open a viable and responsible goal?*

Our Dublin Readers will have an opportunity to sound off on a forum titled:

*Is there a need for a high school in East Dublin? If so, should a bond be issued to generate the fees to build it, with a tax district being established to pay off the bond?*

While you can post to the Town Square forum and vote in the polls anonymously, anyone who registers at [TriValleyViews.com](http://TriValleyViews.com) by Sept. 26 will be entered into a drawing for a \$50 gas card.

Regards, and good luck with the drawing!

## NEWS & VIEWS

By JOHN ZUKOSKI

### Work starts on historic Dublin park

Dublin is inching closer to realizing its vision for a Historic Park. The Dublin Historic Park will be built where the Dublin Square Shopping Center is currently located (at Dublin Boulevard and Donlon Way). Demolition of the shopping center should be completed by the end of September. In addition to public art and a playground for children, the plan for the Dublin Historic Park includes an informal performance stage, a walking trail, outdoor classroom, orchard garden, and an interactive water fountain for kids.

Earlier this year, the Dublin City Council also voted to include the historic turn-of-the-century Kolb Family ranch buildings that are currently located in Pleasanton. These buildings will be relocated to the Dublin Historic Park site by the end of December 2008 and rehabilitated and configured to host a multi-use classroom space, reception and event area, a potential Black Box Theater, office, museum, and garden area. Phase I will also include a grass open area, trees, and park furniture such as benches and tables.

While the expected cost of \$5.4M for Phase

I is fully funded, subsequent phases of the Dublin Historic Park will most likely need to be funded by general budget surpluses or future development impact fees. Phase I of the Dublin Historic Park should be completed by the fall of 2009. A target date has not yet been set for future phases of the park.

The Dublin Historic Park will be a monumental achievement for Dublin. In addition to providing much needed park space in the western side of the city, "the Dublin Historic Park will expand the current Heritage Center and introduce a whole other element of Dublin's history that can be embraced by the entire city," said Parks and Community Services Director Diane Lowart.

The Dublin City Council is expected to authorize the Parks and Community Services department to send out a request for bids to have the Phase I building and landscaping improvements completed. The signature Dublin Historic Park is an example of Dublin balancing its history with its future, traditional park features with inventive new features, and function with form.

*John Zukoski, a lifelong Tri-Valley resident, currently resides in Dublin. He is the publisher of the Around Dublin blog. Readers can email him at [john.zukoski@gmail.com](mailto:john.zukoski@gmail.com).*

## TriValley VIEWS

TriValley Views and [TriValleyViews.com](http://TriValleyViews.com) are products of Embarcadero Publishing's East Bay Division, which publishes Pleasanton Weekly and Danville Weekly.

©2008 Embarcadero Publishing

**PUBLISHER**  
Gina Channell-Allen

**EDITORIAL**  
**Editor**  
Jeb Bing  
**Managing Editor**  
Janet Pelletier  
**Living Editor**  
Emily West  
**Contributor**  
John Zukoski

**ART & PRODUCTION**  
**Art Director**  
Rick Nobles  
**Designers**  
Trina Cannon  
Lili Cao  
Kristin Herman  
Manuel Valenzuela  
**Ad Services**  
Sandy Lee  
**CIRCULATION MANAGER**  
Bob Lampkin

**ADVERTISING**  
**Advertising Manager**  
Esmeralda Escovedo-Flores  
**Advertising Account Executives**  
Steve Chapman  
Paul Crawford  
Karen Klein  
Nancy Taresch  
**Inside Sales**  
Art Gordillo



LIVERMORE  
**J&R SPORTS SUPPLY LLC**  
BUY • SELL • TRADE • CONSIGNMENT

### Under New Ownership

We carry firearms, knives, optics, ammunition, reloading supplies, targets, cleaning equipment, cases, and more at **DISCOUNT PRICES**

925-443-9691 • TOLL FREE 877-937-4668

2558-B Old First Street, Livermore

OPEN M-F: 10-6 SAT/SUN: 10-3



## Purse Party by Nicole

Designer Inspired Handbags

Come visit us  
at our new  
Downtown  
Livermore  
Location!



Mon-Fri 12pm-6pm

Sat 10am-2pm

2222 Second street, Suite 1  
Livermore

Call (925) 787-6652 • [www.igotpurses.com](http://www.igotpurses.com)



JEB BING

Dublin Mayor Janet Lockhart discusses development plans with Planning Commissioner Don Biddle.

## MAYOR

Continued from PAGE 1

brought her home and with round-the-clock and specialized care, Jennifer came out of her coma and lived for another 1-1/2 years, "laughing and sharing time with her friends and giving us another year and a half to be with her before she passed away."

Wendy, the oldest, who had health problems, died in January 2007 at the age of 43.

The other two are married. Brian married Cindy Brinkman, his high school sweetheart from Dublin and the two now live in Colorado and have two children. Karen, now Karen Stirling, lives with her husband Bruce, both of them employed by the Alameda County Sheriff's Department, and has three children.

It was the children who first introduced Janet Lockhart to civic and community affairs when she took a job as a volunteer coordinator for an elementary school, earning \$100 a month. Later she joined the Dublin Chamber of Commerce and was elected to its board of directors. One of her assignments was to serve as liaison to the City Council, which meant she attended every meeting for about four years. By the time she was elected to the council in 1996, she had a good understanding of the challenges and opportunities facing the now-growing city.

"I think Dublin is a very exciting place to live and work these days," Lockhart said. "It's a wonderful feeling. The community feeling has never changed. We've been a small town forever and I don't care how big our population gets, we'll always be the smallest city in the Valley."

Sandwiched between already-fixed boundaries, she expects the residential building boom to continue for a while, but then level off, leaving Dublin with a population of about 60,000, probably 20,000 less than Pleasanton at buildout and as much as 40,000 under Livermore's.

Among her accomplishments are Hacienda Crossings, a vibrant retail center at Hacienda Drive and the freeway, and hundreds of apartments and condos within walking distance of the Dublin-Pleasanton BART station, which she calls smart growth.

She has also championed the funding and development of the new West Dublin-Pleasanton BART station now under construction over the 580 freeway, near the Foothill-San Ramon Road overpass. Along with the station, Lockhart and the council have approved a major office and retail center that will include a hotel and apartments, probably in a 10-story building near the station, with a new downtown planned from the station north to the area where the Target store is located, with new businesses and offices in between.

She calls it a super-block, that will actually stretch for several blocks, bordered by San Ramon Valley, Amador Valley and Dublin boulevards and Village Parkway.

Two years ago, Lockhart opposed a plan for an auto service center nearby, arguing that Dublin's days of hosting those kinds of businesses in the downtown center were over. Today, a new building with offices on top and retail on the ground floor occupy that site with Starbucks anchoring another new retail center across the street.

Apartments and condos over retail stores have become familiar land use plans under Lockhart's leadership, with those kinds of structures near a new Safeway store at Tassajara and Dublin Boulevard, and under construction at the site of the former Pac 'N Save grocery to the west. Phase Three of the Emerald Glen park area will include two swimming pools in a new aquatic center and a community center, with another tall office and residential building planned over one of the pools to provide an indoor-outdoor recreational area that can be used year round.

Another commercial and retail development has been approved across from Hacienda Crossings, which Lockhart said will be the new jewel of the city's smart planning, with a major hotel, office buildings, restaurants and an open air shopping center. Whole Foods and eventually a new Kaiser Permanente Medical Center are planned nearby.

Perhaps Lockhart's greatest influence on Dublin and the Tri-Valley is her cooperative work with neighboring cities. Once involved in onerous lawsuits over land use, traffic and development, Dublin, Livermore and Pleasanton ended their feuding with the elections of Lockhart and mayors Tom Pico of Pleasanton and Marshall Kamena of Livermore.

"The three of us came on board about the same time," she said. "We met and agreed the legal battles had to stop. We built a friendship that continues today with (Pleasanton Mayor) Jennifer Hosterman that has enabled our cities to work together to solve problems. I hope it continues after I leave and when their terms of office are also up."

Through Lockhart's efforts, the mayors of San Ramon and Danville, although their cities are in Contra Costa County, also participate in joint meetings. The five mayors join together for occasional trips to Washington to discuss Tri-Valley needs with federal legislators.

Lockhart also believes that the expanding retail centers of the Tri-Valley are needed to serve an ever-growing number of commuters who pass through this area on their way to work and back again to their homes.

"If you look at Dublin, Pleasanton and Livermore, none of us really look alike," she said. "Pleasanton has its historic downtown and Stoneridge Mall; Livermore has a new downtown and soon a major outlet center off the freeway; Dublin has a major movie theater and outdoor shopping centers which are quite different from what you find in the other two cities.

"I think there's something for everybody here where we all live."

# Are you paying too much for COBRA?

Or do you just need individual or group health coverage at affordable rates?  
Call today to save money!



**Charlene Beasley**

CA Lic #OC26292

Beasley Insurance Services

925-803-9799

[www.beasleyinsurance.com](http://www.beasleyinsurance.com)

Shield Spectrum Savings 4000/8000	Age Range	Monthly Rates
Single	19 to 29.....	\$45
	30 to 34.....	\$64
	35 to 39.....	\$84
	40 to 44.....	\$114
	45 to 49.....	\$156
	50 to 54.....	\$214
	55 to 59.....	\$261
Family	60 to 64.....	\$337
	Under 30.....	\$141
	30 to 34.....	\$199
	35 to 39.....	\$259
	40 to 44.....	\$330
	45 to 49.....	\$401
	50 to 54.....	\$502
55 to 59.....	\$566	
60 to 64.....	\$710	

Health Coverage Rates Effective 2/1/07.  
Rates apply for Contra Costa, Alameda & Santa Clara Counties.

Authorized Independent Agent



An Independent Member of the Blue Shield Association

The rates shown are for people in good health. Rates based on age of younger applicant. Other rates may apply. Shield Spectrum PPO Plans are not available to individuals 65 or older.

Free Quote go to [www.beasleyinsurance.com](http://www.beasleyinsurance.com)



28 Years of Creating Healthy Smiles

LIFE CHANGING SMILES with our

- Dental Implants
- Full Service Dentistry

Missing A Tooth or Teeth? Have Dentures?

If selected, you will receive special pricing for:

- Implant(s), • Abutment(s),
- Porcelain Crown(s)

And a custom fitted \*Perio Protect\* tray to give yourself optimum dental health for your Implant & all other teeth.

\*See Our Website.

**AMADOR DENTAL & ORTHODONTIC**

COMPLETE COSMETIC, FAMILY DENTAL & ORTHODONTIC CARE IN ONE CONVENIENT LOCATION

**CRAIG C. SJOBERG BS, DDS & ASSOCIATES**

925.484.4406

5000 Pleasanton Ave Suite 110, Pleasanton

See Our Website:

[www.AmadorDental.com](http://www.AmadorDental.com)



## PERFORMANCE EXHAUST & BRAKE EXPERTS

QUALITY WORK AT REASONABLE RATES

### Mufflers:

- K&N Intakes
- Turbo Muffler
- Flowmaster
- Corsa
- Borla
- Bassalli
- Magnaflo
- Dynamax

### We Repair:

- Front Axels/CU Boots
- Shocks
- Struts
- Suspensions
- Alternators
- Batteries
- Call for Specials!

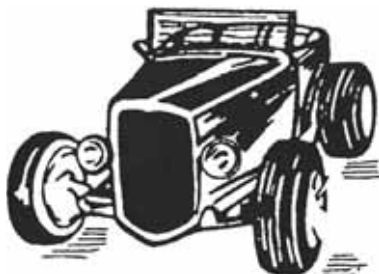
## Tri-Valley Mufflers & Brakes

Since 1981

Mon-Fri 7:30 - 5:30  
Sat 7:30 - 3:00

**Free Estimates  
Free Inspections**

**6437 Golden Gate Dr.  
Dublin**  
(Behind Crown Chevrolet)



**(925) 829-4441**

## BRAKE SPECIAL

### INCLUDES:

- Brake Inspection
- Install Pads and Rotors
- Refinish Rotors or Drums

**10% OFF**

Most Cars with Coupon. Present coupon prior to service.

### SE HABLA ESPAÑOL

Inspecciones de frenos suspension y sistema de mofles gratis pregunte por jorge y amablemente se le tratara

The Caledonian Club of San Francisco presents



**AUGUST 30 & 31  
PLEASANTON**

ALAMEDA COUNTY  
FAIRGROUNDS

More than 25 Pipe Bands  
from the USA and Canada

U.S. Marine Band

34th U.S. Invitational  
Heavy Athletic Events  
& Hammer  
World Championship

**Spectacular  
Grandstand Show**



Western U.S. Open Highland Dancing Championships  
Piping & Drumming Competition • Gathering of the Clans  
Living History Reenactments • Birds of Prey • Highland Cattle  
Celtic Heritage Music & Dancing • Scottish Fiddlers Rally  
Scottish Country Dancing • Celtic Harpers • Clydesdales  
Sheep Dog Trials • Rugby • Five-A-Side Soccer • Shinty

Birds of Prey • British Motor Car Cavalcade

CHILDREN'S GLEN  
FOODS OF BRITAIN • 100+ VENDORS

Red  
Lion  
Pub

**8 Stages Traditional  
Celtic Entertainers &  
Celtic Rock Bands**

### ADMISSION:

- Adult 1-Day: \$17
- Adult 2-Day: \$25
- Senior, Youth (8-16) & Handicapped: \$12
- Under 8 Free

One of the Best Family  
Entertainment Values in  
Northern California....  
and right here at home!

[www.caledonian.org](http://www.caledonian.org)

## SIZZLING SUMMER DEALS!



**TRANSMISSION  
PROBLEM?  
WE'LL INSPECT**

**FREE**  
\$125 Value

Not valid with any other offer.  
No appointment necessary  
Expires 11/30/08

FOR OUR CUSTOMERS:  
Local Shuttle Service and  
Early Bird Drop Off

**TRANSMISSION  
SERVICE SPECIAL**

**\$99<sup>95</sup>**

- Change Fluids
  - Change Fliter
  - Replace Pan Gasket
  - Road Test
- Most Cars

Not valid with any other offer.  
No appointment necessary  
Expires 11/30/08



SERVING THE BAY AREA SINCE 1964

# Schuck's Transmission

7016 Village PKWY  
Behind Dublin Carpet

**925.828.9699**



CALL NOW FOR YOUR APPOINTMENT

THERE IS A REASON WE ARE THE ONLY BBB/HONOR  
ROLL MEMBER IN THE TRI-VALLEY

Quick In & Out Service With Appointment. Comfortable Customer  
Lounge With Overhead Model Train & High Speed Internet. 110  
Channels of Direct TV while you wait. Best Smog Service In The  
Area. 100% Accurate, Fully Computerized Equipment.



**FREE SMOG  
CERTIFICATE**

WITH PAID SMOG INSPECTION. EXPIRES 12/31/08



[www.ALL-SMOGS.com](http://www.ALL-SMOGS.com)

**828-PASS**  
**925-828-7277**

**7034 Village Pkwy.**  
Behind Dublin Carpet. 25 Years Experience!



HONOR ROLL  
MEMBER FOR  
FIVE YEARS



**Canned Food Drive**  
**\$5 OFF**  
**INSPECTION**  
minimum of one can per customer  
one coupon per person

Presented by **JC's RV's Inc.**  
**Stoneridge Mall  
 RV Show & Sale**  
**August 29-September 7th 9am-8pm**



Factory Incentives!  
 Factory special purchases!  
 Bank Reps below market!  
 Factory Rebates starting at \$6,000 back to you  
 Fuel rebates starting at \$1,500 back to you

**No Reasonable Offer Will be Refused!**

Bring your trade in for a **FREE** Appraisal! (no purchase necessary)

Ask about our **GAS** and **DIESEL** programs!

**ZERO DOWN** programs available with easy terms, on approved credit.

**SPECIAL FINANCING ON SITE!**  
**MILLIONS OF DOLLARS OF USED INVENTORY** to choose from at liquidation prices

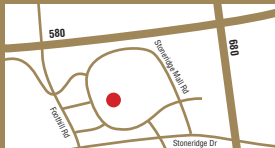
**OVER 40 NEW & USED BRANDS** including:  
 Holiday Rambler • Fleetwood • Tiffin Motorhomes • Itasca by Winnebago  
 Gulf Stream • **AND MANY MORE...**

Parking & Admission - **FREE!**  
 Best time to buy is now - **SAVE THOUSANDS!!!**

From 680 - Take Stoneridge Road exit and head West - Right on Stoneridge Mall Road - show is on left in Stoneridge parking lot across from JC Penny Home Store

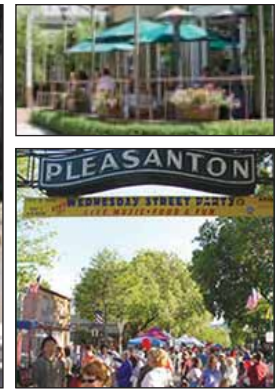
From 580 - Take Foothill/San Ramon Road exit and head South - show is on left in Stoneridge parking lot across from JC Penny Home Store

For more details - got to [www.RVShowBayArea.com](http://www.RVShowBayArea.com)



Downtown Pleasanton Businesses  
 Are Now Open Thursdays...

**Late 'til 8!**



**Shop • Dine • Discover**

- Acc'sentials • Alexander's Fine Art • All About Me • Clover Creek • Fleet Feet
- G.R. Doodlebug Gallery M • Gourmet Works • Jaime Bridal & Weddings Jewelers Gallery
- LilyAnn's Lingerie Lotus Consignment Boutique • Me & Emmi • Murphy's Paw • Pans on Fire
- Passionate Athlete • RetroMartini • Savvy Seconds • Spray Soleil • Stork's Nest
- Studio 7 Fine Arts • Sugar Shack • The Berry Patch • Three Dog Bakery
- Towne Center Books • Worthington Gallery West



**Experience Downtown Pleasanton**

For more information about Downtown Pleasanton visit:  
[www.pleasantondowntown.net](http://www.pleasantondowntown.net) or call (925) 484-2199

**TROUBLE MAKING HOUSE PAYMENTS?  
 FACING POSSIBLE FORECLOSURE?**

**Let Me Help You Get Out of This Mess....**



**Contact John Mitchell**  
**REALTOR®**

**For A FREE Confidential Consultation**  
**925.556.4400**

[www.MortgagePaymentCrisis.com](http://www.MortgagePaymentCrisis.com)

**Triple Threat Performing Arts**

- Tap • Tap Jazz • Tap Ballet • Hip Hop
- Lyrical & Contemporary
- Toddler & Adult Programs
- Drama & Musical Theater
- Competition Teams
- Instrumental & Vocal Lessons
- Private & Group Classes
- Birthday Parties • Summer Camps
- **NEW offering choir for the fall**

315 Wright Brothers Ave.  
 Livermore, CA 94551

4220 Commercial Dr. Suite 9  
 Tracy, CA 95304



**Free gift to the first 300 to register!**



**(925) 443-5272**

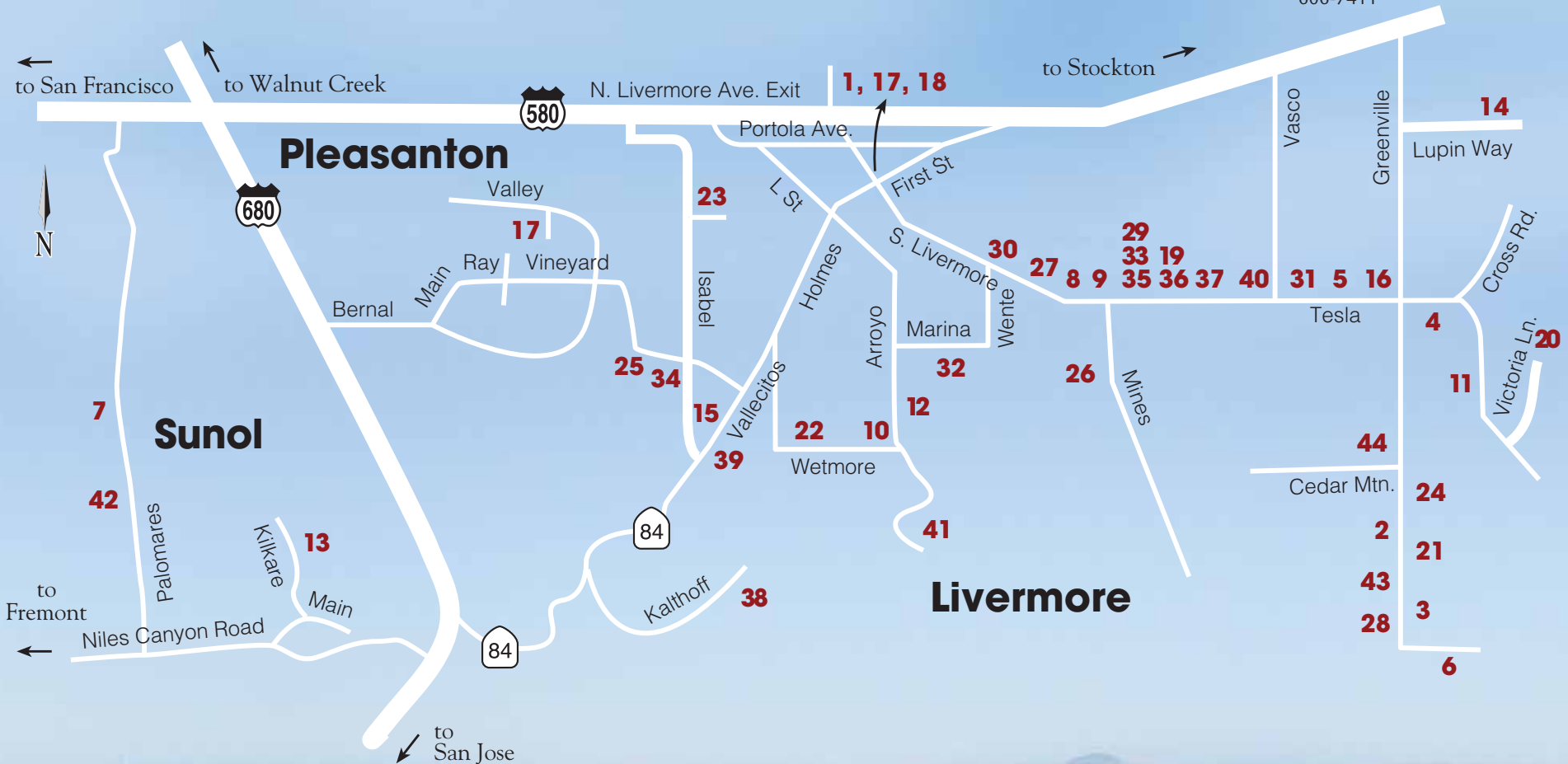
[WWW.TRIPLETHREATPA.COM](http://WWW.TRIPLETHREATPA.COM)

**Fall Session  
 Starts Sept. 8th**

**Online registration available**

# LIVERMORE VALLEY WINERIES

- 1. Battaion Cellars**  
21 S. Livermore Ave. #109  
Livermore 94550  
245-9242
- 2. Bent Creek Winery**  
5455 Greenville Rd.  
Livermore 94550  
455-6320
- 3. Big White House Winery**  
6800 Greenville Rd.  
Livermore 94550  
449-1976
- 4. Bodegas Aguirre Winery**  
8580 Tesla Rd.  
Livermore 94550  
606-0554
- 5. Cedar Mountain Winery**  
7000 Tesla Rd.  
Livermore 94550  
373-6636
- 6. Charles R. Vineyard**  
8195 Crane Ridge Rd.  
Livermore 94550  
454-3040
- 7. Chouinard Vineyard**  
33853 Palomares Rd.  
Castro Valley 94552  
(510) 582-9900
- 8. Concannon Vineyard**  
4590 Tesla Rd.  
Livermore 94550  
456-2505
- 9. Crooked Vine Winery/Stony Ridge Estate**  
4948 Tesla Rd.  
Livermore 94550  
449-0458  
371-8156
- 10. Deer Ridge Vineyards**  
1828 Wetmore Rd.  
Livermore 94550  
743-9427
- 11. Eagle Ridge Vineyard**  
10017 Tesla Rd.  
Livermore, 94550  
447-4328
- 12. Eckert Estate Winery**  
2400 Arroyo Rd.  
Livermore 94550  
371-8606
- 13. Elliston Vineyards**  
463 Killkare Rd.  
Sunol 94586  
862-2377
- 14. El Sol Winery**  
8626 Lupin Way  
Livermore 94550  
606-1827
- 15. Fenestra Winery**  
83 Vallecitos Rd.  
Livermore 94550  
447-5246
- 16. Garré Vineyard, Winery, Café**  
7986 Tesla Rd.  
Livermore 94550  
371-8200
- 17. Hidden Creek Winery**  
21 S. Livermore Ave. #101  
Livermore 94550  
989-1163  
Also at The Crush  
1249 Quarry Ln. #140  
Pleasanton 94566  
484-2422
- 18. John Christopher Cellars**  
25 S. Livermore Ave. #103  
Livermore 94550  
456-9463
- 19. La Rochelle Winery**  
5443 Tesla Rd.  
Livermore 94550  
243-6442
- 20. Les Chenes Estate Vineyards**  
5562 Victoria Ln.  
Livermore 94550  
373-1662
- 21. Little Valley Winery**  
5700 Greenville Rd.  
Livermore 94550  
862-9006
- 22. Livermore Valley Cellars**  
1508 Wetmore Rd.  
Livermore 94550  
447-1751
- 23. Longevity Wines**  
35 Rickenbacker Circle South,  
Suite B  
Livermore 94550  
551-3673
- 24. McGrail Vineyards, Winery**  
5600 Greenville Rd.  
Livermore 94550  
373-6214
- 25. Mitchell Katz Winery at Ruby Hill**  
1188 Vineyard Ave.  
Pleasanton 94566  
931-0744
- 26. Murrieta's Well**  
3005 Mines Rd.  
Livermore 94550  
456-2390
- 27. Page Mill Winery**  
1960 S. Livermore Ave.  
Livermore 94550  
456-7676
- 28. Red Feather Winery**  
5700 Greenville Rd.  
Livermore 94550  
(510) 861-2722
- 29. Red Skye Winery**  
5143 Tesla Rd.  
Livermore 94550  
(510) 795-7725  
Also at Blacksmith Square  
21 S. Livermore Ave.  
Livermore 94550
- 30. Retzlaff Estate Winery**  
1356 S. Livermore Ave.  
Livermore 94550  
447-8941  
Also at Blacksmith Square  
25 S. Livermore Ave.  
Livermore 94550
- 31. Rios-Lovell Estate Winery**  
6500 Tesla Rd.  
Livermore 94550  
443-0434
- 32. Rodrigue-Molyneaux Winery**  
3053 Marina Ave.  
Livermore 94550  
447-4280
- 33. Ryhan Estate Vineyards**  
5143 Tesla Rd.  
Livermore 94550  
(408) 712-1984
- 34. Ruby Hill Winery**  
400 Vineyard Ave.  
Pleasanton 94566  
931-9463
- 35. The Singing Winemaker**  
5143 Tesla Rd.  
Livermore 94550  
606-9463
- 36. The Steven Kent Winery**  
5443 Tesla Rd.  
Livermore 94550  
243-6440
- 37. Tamás Estates**  
5489 Tesla Rd.  
Livermore 94550  
456-2380
- 38. Tenuta Vineyards**  
633 Kalthoff Common  
Livermore 94550  
960-1006
- 39. Thomas Coyne Winery**  
51 E. Vallecitos Rd.  
Livermore 94550  
373-6541
- 40. Wente Vineyards Estate Winery**  
Tasting Room  
5565 Tesla Rd.  
Livermore 94550  
456-2305
- 41. Wente Vineyards Restaurant & Visitors Center/Tasting Room**  
5050 Arroyo Rd.  
Livermore 94550  
Visitors Center Tasting Room:  
456-2405  
Restaurant: 456-2450
- 42. Westover Vineyards**  
34329 Palomares Rd.  
Castro Valley 94552  
(510) 537-3932
- 43. White Crane Winery**  
5405 Greenville Rd.  
Livermore 94550  
455-8085
- 44. Wood Family Vineyards**  
7702 Cedar Mountain Dr.  
Livermore 94550  
606-7411





STEVEN F. KELLY

Thomas Coyne Winery, nestled among hillside vineyards, awaits the start of the season.

## HARVEST

Continued from PAGE 1

There are no Sunday-only tickets.

These tickets include entry into the wineries, complimentary wine tasting at each winery, live music, free parking, free shuttle bus transportation, a collectable souvenir glass and an official event program.

Non-drinking tickets are also available for "designated drivers" and children who will not be sipping any wine, with those tickets also including entrance into the wineries, three non-alcoholic drinks, complimentary transportation on the shuttle buses that travel to each winery throughout the day, and complimentary parking at the Robertson Park hub.

Tickets can be reserved by calling 447-9463 or visit the association's website at [www.lvwine.org](http://www.lvwine.org). Tickets also are available at:

- \* Participating wineries.
- \* First Street Wine Company, 2211 First Street, Livermore.
- \* Vino Cellars, 1772 First Street, Livermore.
- \* Wine Steward, 641 Main Street, Pleasanton.
- \* PW Markets throughout the Bay Area.

Because of the anticipated crowds, Chandler suggests taking one of the shuttle buses from the Robertson Park hub at 3200 Robertson Park Road, where L Street becomes Arroyo Road.

"It's the complimentary shuttle buses that circulate between the wineries for two days that make this Labor Day weekend event unique," Chandler said. "No other wine region offers transportation. And, in spite of high gas prices, we are offering the buses again this year. We hope our guests and visitors will take advantage of them during the weekend."

An added benefit this year is that five Livermore wineries will be gathered together in one shady location at Robertson Park to pour samples of their wines, with live music at the park both Sunday and Monday.



STEVEN F. KELLY

Sign post in Livermore Valley guides visitors to local wineries.

Some 30 shuttles will use six different routes stopping at their specified wineries along each route. Winery-goers will receive a map outlining the six different shuttle routes, so they can choose which one to take. In addition, most routes will cross with at least one other so ticket-bearers can transfer to another shuttle route and group of wineries, if they choose. All shuttles will return to the hub at the end of their route.

Wine event organizers said each winery will offer live music, including several well-known local bands playing reggae to classic rock, and acoustic guitar to rockabilly and good old blues. Food will also be available for purchase at each location with cuisine to tempt

every palate, from Mexican to Mediterranean, Hawaiian style to hummus, prime rib to pulled pork sandwiches, plus ice cream, brownies and, of course, barbecue.

Chandler said that while sipping and nibbling, guests will be able to peruse the jewelry, pottery, glass and metal craft of many local artisans at the various wineries, taste the abundant olive oils from the Livermore Valley region, enjoy fine art displays and take in winery education and special history exhibits.

With a record-high number of 43 wineries participating in the Harvest Wine Celebration this year, participants are being urged to start their day closest to the wineries they want to visit, choosing a shuttle that goes to those locations. There are a total of seven different routes with at least four wineries on each shuttle stop. From past experience, wine visitors take about an hour at each location.

"The two-day celebration is the Winegrowers Associations' annual fundraising event," Chandler said. "Many events of this size and caliber hire event planning firms, but we keep the planning and logistics in-house and rely on the generous support of volunteers to make sure the proceeds benefit our nonprofit association directly. Many of our volunteers have been involved in this event for several years now."

"It's a fun weekend," she added. "We get calls year 'round asking when the 'event with the buses going to each of the wineries' takes place. This is it!"

The Livermore Valley Winegrowers Association was founded in 1981 by a small group of vintners and growers, as development pressure threatened their valley. Today, with a growing membership, the LVWA is dedicated to showcasing the world-class wine and visitor amenities of the Livermore Valley Wine Country and attracts more than half a million visitors annually to this unique appellation. Besides the wineries, the valley is home to 3,600 acres of grapes, 3,200 of which are protected as vineyards in perpetuity.

### The details

Purchase tickets online at [www.lvwine.org](http://www.lvwine.org); at the wineries; or call the Livermore Valley Winegrowers Association at 925.447.WINE (447-9463). Advance sales, \$50. Day of event tickets, \$55. Monday only, \$45.

### Participating wineries

- Battalion Cellars
- Bent Creek Winery
- Big White House and John Evan
- Bodegas Aguirre Winery
- Cedar Mountain Winery
- Charles R Vineyards
- Chouinard Vineyards
- Concannon Vineyard
- Crooked Vine and Stony Ridge Winery
- Deer Ridge Vineyards
- Eagle Ridge Vineyard
- Eckert Estate Winery
- el Sol Winery
- Elliston Vineyards
- Fenestra Winery
- Garré Vineyard and Winery
- Hidden Creek Winery
- John Christopher Cellars
- La Rochelle Winery & The Steven Kent Winery
- Les Chenes Estate Vineyards
- Little Valley Winery
- Livermore Valley Cellars
- Longevity Wines
- McGrail Vineyards and Winery
- Mitchell Katz Winery
- Murrieta's Well Winery
- Page Mill Winery
- Palomares Vineyard Winery & Westover Vineyard
- Red Feather Winery
- Red Skye Winery
- Retzlaff Estate Vineyards
- Ryhan Estate Vineyards
- Ruby Hill Winery
- Tenuta Vineyards
- The Singing Winemaker
- Thomas Coyne Winery
- Wente Vineyards Estate Winery
- White Crane Winery
- Wood Family Vineyards

## TV30 to air candidates' forums

11 programs needed for Tri-Valley races

By JEB BING

TV30, the Tri-Valley's community television station, will produce and broadcast 11 different forums for candidates to state their views before the Nov. 4 elections.

The TV30 board of directors, at the request of interim system executive director Roger Bradley, administrative analyst for the city of Dublin, approved budgeting \$6,000 to produce the programs. Bradley estimated that it would take 140 hours of TV30 staff time to handle the work and that the 30-minute to one-hour shows would be broadcast live and then re-broadcast throughout October and before the Nov. 4 election.

Candidates are likely to be interviewed by Carolyn Siegfried, a longtime on-air interviewer for TV30.

The races to be covered are: Dublin City Council, Dublin mayor, Pleasanton City Council, Pleasanton mayor, Dublin Unified School District board, Livermore Unified School District board, Pleasanton Unified School District board, San Ramon Valley Unified School District board, Dublin-San Ramon Services District board and the Livermore Area Recreation and Park District board.

The station also will interview proponents and opponents of two competing initiatives in Pleasanton that are on the Nov. 4 ballot, measures that deal with proposed bans on hillside development and the city's 29,000-unit housing cap.

Bradley said each program would cost an estimated \$540 to produce.

Other candidate forums also will be produced and broadcast on Comcast's separate community service Channel 26.

## Park district to display arts

The East Bay Regional Park District is teaming up with the Bankhead Theater in Livermore to begin a traveling exhibition of art works based on any of the East Bay Regional Parks with artists living within 50 miles of the San Francisco Bay Area participating.

Called "Different View: A New Take on our Regional Parks," the exhibition will initially be on display from Sept. 17 through Oct. 30 at the Bankhead Theater in Livermore.

The Bankhead event will act as the starting point for a host of 75th Anniversary activities for East Bay park district with selected works later traveling to other exhibition sites as the celebration continues throughout 2009.

# Goings On

a calendar of TriValley events worth a look

## Aug. 30 & 31

### SCOTTISH HIGHLAND GATHERING AND GAMES

The Caledonian Club of San Francisco's Scottish Highland Gathering and Games will be held from 8 a.m. to 10 p.m. Saturday, Aug. 30 and from 8 a.m. to 6 p.m. Sunday, Aug. 31, at the Alameda County Fairgrounds, 4501 Pleasanton Ave., Pleasanton. Pipe bands, caber throwing, Highland dancing, and competitions in five-a-side soccer, rugby and shinty are all part of the two days. The Children's Glen will have games, prizes and face-painting for the little tykes. Admission is \$17 for an adult one-day ticket, or \$25 for a two-day; children under 8 and seniors 65 or older are free; youths 8 to 16 are \$12. For more information, visit [www.caledonian.org](http://www.caledonian.org).



Bagpipers perform at Scottish Games

show on the West Coast, will be held Friday through Sunday, Sept. 12-14 at Alameda County Fairgrounds, 4501 Pleasanton Ave., Pleasanton. Attendees can meet and buy directly from top artisans with unique arts and crafts. Sponsored by Western Exhibitors, the show will be open 10 a.m. to 6 p.m. Friday and Saturday and

10 a.m. to 5 p.m. Sunday. Admission is \$9; seniors 62 and over, \$7; children 13-17, \$4; children 12 and under free when accompanied by an adult. One ticket good for all three days. For more information, visit [www.harvestfestival.com](http://www.harvestfestival.com) or call 415-447-3205.

## Sept. 17

### FOREIGNER

The Concerts at Wente Vineyards presents Foreigner Wednesday, Sept. 17. Gates to the concert seating open at 6 p.m. and the performance begins at 8:15 p.m. The outdoor theater is located at 5050

Arroyo Road, Livermore. Tickets are available at the box office, 456-2424, or through Ticketmaster at 685-TIXS. For more information, call 456-2424 or visit [www.wentevineyards.com/concerts](http://www.wentevineyards.com/concerts).

## Sept. 20 & 21

### PLEASANTON ART & HERITAGE FESTIVAL

The Pleasanton Art & Heritage Festival, sponsored by the Pleasanton Downtown Association, will be held from 10 a.m. to 5 p.m. Saturday and Sunday, Sept. 20 and 21, on Main Street in Pleasanton. Admission is free. For more information visit [www.pleasantondowntown.net](http://www.pleasantondowntown.net) or call 484-2199.

### DAY ON THE GLEN

The City of Dublin Parks & Community Services Department will host Day on the Glen from 10 a.m. to 5 p.m. Saturday and Sunday, Sept. 20 and 21, at Emerald Glen Park, at the corner of Tassajara Road and Gleason Drive. Admission is free. The event features animal exhibits, international music performances, face painting, arts and crafts, a petting zoo, carnival games and rides and a skateboarding demonstration. For \$15, teens can enter a skateboarding contest for Sunday. There will also be a 3-on-3 basketball tournament Sunday. The 7th Annual Dublin Open Volleyball Tournament will be held all weekend. For information, visit [www.dayontheglen.com](http://www.dayontheglen.com) or call 556-4500.

## Sept. 21

### AMERICAN BALLET THEATRE II

Livermore Valley Performing Arts Center

will present American Ballet Theatre II at 2 p.m. Sunday, Sept. 21, at the Bankhead Theater, 2400 First St., Livermore. Ticket prices are available at [www.livermoreperformingarts.org](http://www.livermoreperformingarts.org) or by calling 373-6800 between noon and 6 p.m. Monday through Saturday.

## Oct. 1

### RICKIE LEE JONES

The Livermore Valley Performing Arts Center will present Rickie Lee Jones at 8 p.m. Wednesday, Oct. 1, at the Bankhead Theater, 2400 First St., Livermore. Ticket prices are available at [www.livermoreperformingarts.org](http://www.livermoreperformingarts.org) or by calling 373-6800 between noon and 6 p.m. Monday through Saturday.



Rickie Lee Jones

## Oct. 4

### PERCUSSION GROUP CINCINNATI

Del Valle Fine Arts will present Percussion Group Cincinnati at 8 p.m. Saturday, Oct. 4, at the Bankhead Theater, 2400 First St., Livermore. Ticket prices are \$29, \$24, \$19 and available at [www.livermoreperformingarts.org](http://www.livermoreperformingarts.org) or by

calling 373-6800 between noon and 6 p.m. Monday through Saturday.

## Oct. 5

### HOPS & VINE FALL FEST

The Pleasanton Downtown Association will present the Hops & Vine Fall Fest, featuring live music, dancing, food, and of course, beverages derived from "hops" and picked from the "vine." The event will be from 1 to 5 p.m. Sunday,

Oct. 5, behind the Cheese Factory building at 830 Main Street, Pleasanton. Admission is free. Music will be provided by local favorite Word of Mouth and a variety of beers will be poured, including microbrews and wines. For information, visit [www.pleasantondowntown.net](http://www.pleasantondowntown.net) or call 484-2199.

## Oct. 3

### SMOTHERS BROTHERS/LVPAC FALL GALA

The Smothers Brothers will entertain guests at the Livermore Valley Performing Arts Center Fall Gala at 8 p.m. Friday, Oct. 3, at the Bankhead Theater, 2400 First St., Livermore. Ticket are \$125/\$115/\$105/\$95 and include a post-performance reception. Tickets are available at [www.livermoreperformingarts.org](http://www.livermoreperformingarts.org) or by calling 373-6800 between noon and 6 p.m. Monday through Saturday.

## Oct. 3-5

### HOME & GARDEN SHOW

Capital Showcase Home & Garden Show will be held from noon to 6 p.m. Friday, Oct. 3; 10 a.m. to 7 p.m. Oct. 4; and 10 a.m. to 6 p.m. Oct. 5 at the Alameda County Fairgrounds, 4501 Pleasanton Ave., Pleasanton. Admission is \$6; Kids 12 and under are free. For more information, visit [www.capitalshowcase.com](http://www.capitalshowcase.com), or call 682-7227.

## Oct. 4

### UDDERLY DIVINE BOVINE EVENT

The Udderly Divine Bovine Event, presented by the Amador-Livermore Valley Historical Society, will benefit Pleasanton's Alviso Adobe Community Park and the Museum On Main Street. The event will be held from 6 to 11 p.m. Saturday, Oct. 4, at the Pleasanton Senior Center, 5353 Sunol Blvd., Pleasanton. Includes music by Tommy & the 4 Speeds, voice and silent auctions, cuisine tastings from local restaurants, and an Alviso Adobe Community Park presentation. Reservations are \$65 per person and are available at Museum on Main, 603 Main Street, open Wednesday through Sunday, 9 a.m. to 5 p.m., or by phone at 462-2766. For information, call 462-2766.

## Oct. 10 & 11

### PLEASANTON GHOST WALK

Amador-Livermore Valley Historical Society will host the annual Pleasanton Ghost Walks Friday, Oct. 10, and Saturday, Oct. 11. Tickets sell fast. The tours will run from 5 to 8:30 p.m. on Friday, and 4 to 8:30 p.m. on Saturday and will begin at the Museum on Main, 603 Main St. The Ghosts of Pleasanton Talk will be on Sunday, Oct. 12.

## Oct. 10-19

### THE BARBER OF SEVILLE

The Livermore Valley Opera will present The Barber of Seville at 8 p.m. Friday and Saturday, Oct. 10, 11, 17 and 18, and 2 p.m. Sunday, Oct. 12 and 19, and 7:30 p.m. Wednesday, Oct. 15 at the Bankhead Theater, 2400 First St., Livermore. Ticket prices are available at [www.livermoreperformingarts.org](http://www.livermoreperformingarts.org) or by calling 373-6800 between noon and 6 p.m. Monday through Saturday.

## Oct. 11

### ARTWALK LIVERMORE

The 7th Annual ArtWalk Livermore will be held from 11 a.m. to 5 p.m. Oct. 11. Downtown Livermore will become a gallery district for the day, with more than 100 artists exhibiting inside and outside of shops, tasting rooms and restaurants. This year's ArtWalk has been designated as a fundraiser for the Bothwell Arts Center. The event is free. For information contact 447-ARTS or [info@artwalklivermore.org](mailto:info@artwalklivermore.org).

## Aug. 31 & Sept. 1

### 27TH ANNUAL HARVEST WINE CELEBRATION

The Livermore Valley Winegrowers Association's 27th Annual Harvest Wine Celebration will be held from noon to 5 p.m. Sunday, Aug. 31 and Monday, Sept. 1. Participants will gather at the transportation hub, Robertson Park Rodeo Grounds, 3200 Robertson Park Road, Livermore. Free shuttles will be available to take ticket-holders to the participating wineries and events. Tickets are \$50 for two days; \$55 at the door; \$45 for Monday-only. For information, visit [www.lwine.org](http://www.lwine.org).

## Sept. 3

### WILLIE NELSON

The Concerts at Wente Vineyards features Willie Nelson Wednesday, Sept. 3. Gates to the concert seating open at 6 p.m. and the performance begins at 8:15 p.m. The outdoor theater is located at 5050 Arroyo Road, Livermore. Tickets are available at the box office, 456-2424, or through Ticketmaster at 685-TIXS. For more information, call 456-2424 or visit [www.wentevineyards.com/concerts](http://www.wentevineyards.com/concerts).

## Sept. 12-14

### ART & CRAFT SHOW

The Harvest Festival Original Art & Craft Show, the largest indoor arts and craft



**Donna Zarrillo**

REALTOR

Whatever the market conditions are whether you are a first time buyer or an experienced buyer/seller, Donna puts her clients first with the same high level of expertise and professionalism. "Donna, you made us feel like we were the only people you were working with. Thank you." Donna can be contacted at

**HOMETOWN GMAC REAL ESTATE**

(925) 417-8603  
(925) 998-2363  
www.donnazarrillo.com



**Delores Gragg**

REALTOR

Trusted Real Estate Advisor in the Tri Valley. Top Producer for the past 12 years. With 12 years of local Real Estate experience, and having a true love for Real Estate, my transactions are handled with care and expertise. If you are thinking of buying or selling a home in the near future, give me a call for a free consultation.

**HOMETOWN GMAC REAL ESTATE**

(925) 583-1132  
www.deloresgragg.com



**JuliAnn Robinson**

"As a Farmers Insurance agency owner, JuliAnn specializes in helping individuals and businesses achieve financial security by protecting and growing their assets. She is among the top 3% of Farmers agents because she is dedicated to making a difference, one client at a time.

**ROBINSON INSURANCE AGENCY**

11700 Dublin Bl., Ste 200  
Dublin, California  
(925) 828-0198



**Julie Loomis**

CERTIFIED PUBLIC ACCOUNTANT

As president of JL Consulting, Julie Loomis, CPA is dedicated to working closely with business owners, real estate investors, and individuals to reduce taxes and increase profits. We are committed to the growth of the local accounting and business community. We are a Certified QuickBooks Pro Advisor and members of the American Institute of CPAs, the California Society of CPAs and the Pleasanton Chamber.

**JL CONSULTING A PROFESSIONAL ACCOUNTING CORPORATION**

(925) 846-1859  
www.jlcpa.net



**Sherri Souza**

"The Connected Realtor," Sherri is active in her community and industry. She has the reputation of being knowledgeable about the home buying and selling process and does this seemingly effortlessly for her clients. My relationships open the door for my clients to be at home anywhere. Where people, homes, opportunity and a bit of imagination intersect, you'll find me at Alain Pinel Realtors.

Experience the difference – personal ties and relationships turn a property into a home.

**ALAIN PINEL REALTORS**

(925) 583-1132  
www.souza4RealEstate.com



**Dr. Paige Van Slooten, D.C.**

Dr. Paige provides hope to individuals with health conditions like High Blood Pressure, Fibromyalgia, Migraines and Arthritis through a specific application of chiropractic. She also helps many children and serves on an annual chiropractic mission to El Salvador. To learn more about the hope Dr. Paige provides, visit www.thespecific.com.

**THE SPECIFIC CHIROPRACTIC CENTER**

7950 Dublin Bl., Suite 103B  
Dublin CA 94568  
(925) 560.0700  
Paige@thespecific.com



**Marissa Sosa accountant**

A Livermore native Marissa handles all bookkeeping and is acting office manager for Sosa Granite & Marble Inc. Sosa founded by her father in 1978 is a family owned and ran company located in Livermore, CA that boasts a 53,000 square foot showroom. While supplying the largest selection of granite and marble available from all over the country Marissa strives to keep Sosa Granite & Marble the most extravagant fabricator in the Bay Area.

**SOSA GRANITE**

(925) 373-7675  
7701 Marathon Dr.  
Livermore, CA  
msosa@sosagranite.com



**Dr. Michele M. Chalmers, DDS**

As a solo practitioner in her Pleasanton office since 1995, East Bay native Dr. Michele Chalmers successfully combines her background in the arts with her dental degree acquired at the USC School of Dentistry.

By incorporating the latest advances in cosmetics, Zoom bleaching, and implants, Dr. Chalmers' patients enjoy healthy teeth and a beautiful smile.

**GENERAL FAMILY AND COSMETIC DENTIST**

2324 Santa Rita Road,  
Suite 3 Pleasanton,  
CA 94566  
(925) 462-4045



**Madeline Walker**

REALTOR

Madeline Walker is a full-time professional REALTOR, serving the Real Estate community since 1988, and specializing in the Bay Area. Madeline comes from a background of family owned businesses of sales, marketing and teaching specialized courses. She is used to hard work, long hours, all with the final goal of client satisfaction.

**INTERO REAL ESTATE**

(800) 319.8991  
www.madelinewalker.com



**Leslie Wolf**

State Farm Insurance

Leslie Wolf is a licensed insurance professional with strong customer and community ties, and makes customer satisfaction a number one priority. Leslie is a one stop shop for your home, renter's, auto, business, life and other insurance and financial needs. The office is easy to find (right behind Hooters), pet and kid friendly. Leslie is also available for evening and weekend appointments.

**LESLIE WOLF, STATE FARM INS.**

7950 Dublin Bl., Ste 103A  
Dublin  
(925) 404-2000

While the Kids Are  
Lining Up for Recess...



Time to have  
**Tom E. Chance**  
Line Up A  
Fine New Home for You!



**TOM E. CHANCE** "The Valley's" REALTOR®

*Serving the Real Estate Needs  
of "Our" Tri-Valley for Over 27 Years!*

[www.TomChance.com](http://www.TomChance.com)

(925) 487.6360

TomChance@earthlink.net



# Learn to Swim!

- Indoor pools heated to 92°
- Instruction for all ages and abilities: infant through adult
- Small class size: four students per instructor
- Open year-round, 7 days a week with morning, afternoon & evening classes
- Safety is our priority: instructors are fully-trained & CPR certified



LIVERMORE • DUBLIN  
FREMONT • NEWARK

*The Bay Area's  
trusted swim school  
since 1973*

**FREE  
SWIM  
CLASS!**

With this coupon. First time customers only.  
Subject to availability.  
May not be available at all locations.  
One free class per person. Some restrictions apply.  
Limited time offer. TVV100.

## 1.800.810.SWIM

[www.AmericanSwimAcademy.com](http://www.AmericanSwimAcademy.com)

# Hey Tri-Valley!

## Indulge at elements

### with a 55 or 80

### Minute Massage!



OPEN 7 DAYS  
A WEEK!



## elements®

therapeutic massage

# \$59

## 55 minute massage session

\*new clients only,  
expires Sept. 15, 2008,  
only at this location.

Regularly \$79.00

LOCATED NEXT TO CAMPO DI BOCCO

## 101 E VINEYARD AVE, STE 221

## 925.461.1717

[www.ETMRUBYHILL.COM](http://www.ETMRUBYHILL.COM)

# DINING GUIDE

WHERE TO DINE IN THE TRIVALLEY



## C & D BISTRO

We're not *just* for those Special Events...  
Try us for an exceptional casual dining  
experience!

- Several Entrees available on half-plates...  
Just \$15.95
- Everyday Complimentary glass of French  
house wine with dinner!
- Open for lunch Saturday and Sunday too.

**210 Rose Avenue, Pleasanton**  
**(925) 462-0100**  
**www.CDBistro.com**

Visit our website to see what's new!



*C & D*  
*Bistro*

## LA VITE RISTORANTE

Open for lunch & dinner

With combination of an elegant  
Banquet room and charming wine  
bar ideal for rehearsal dinners, bridal  
showers, company parties or any  
special occasion you are celebrating.

- Catering Service
- Take Out
- Wine Bar

**3037-G Hopyard Rd., Pleasanton**  
**(925) 485-4500**  
**www.LaViteRestaurant.com**



*La Vite*  
RISTORANTE



# TriValley VIEWS

your local newspaper mailed to 29,000 homes  
in Dublin and Livermore

**(925) 600-0840**

Produced by the Pleasanton Weekly,  
a division of Embarcadero Publishing Company

- Be informed.
- Voice your opinion.
- Stay in touch.
- Enjoy the Views.

### Let your voice be heard!

Have something on your mind?  
Have questions you want answered?  
Step on the virtual soap box at

**TriValleyViews.com!**



*Envy*



*Galaxy*

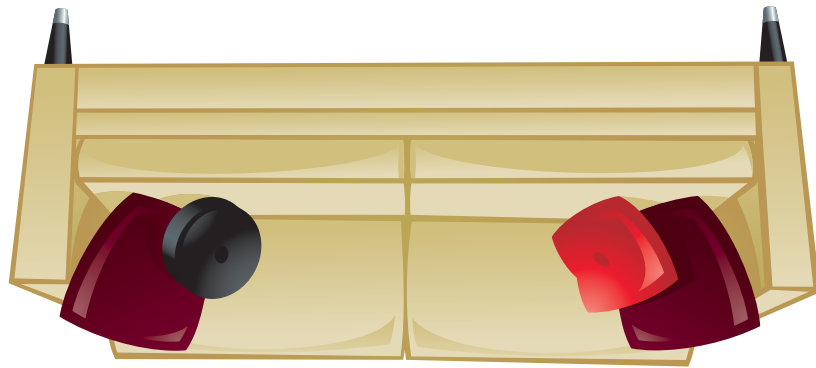
Trust. Honesty. Integrity.  
Confidence. Expertise.  
Certain values can only be  
found at Master IJO Jeweler.

**IJO** MASTER  
JEWELER  
BRILLANCE YOU DESERVE™

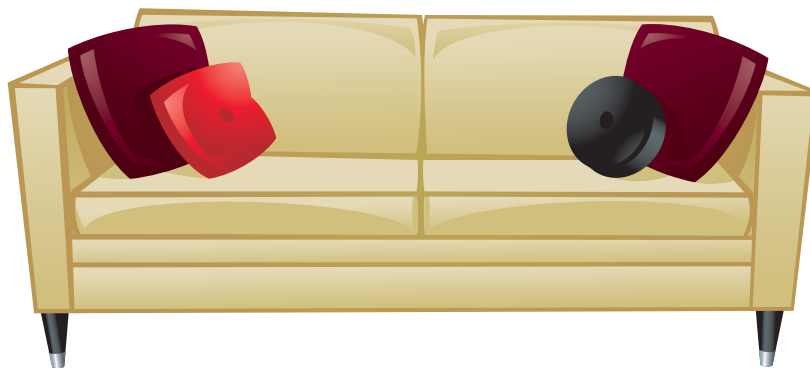
**Cardinal**  
Jewelers  
ORIGINAL OWNERS  
est. 1977

**(925) 416-1111**

**NEW LOCATION!**  
**3003-B HOPYARD RD., PLEASANTON, CA**  
**IN THE VILLAGE SHOPPING CENTER**



**Dont upend  
your budget  
over  
furniture!**



**At  
Home Consignment Center  
you'll find  
the lowest prices  
Period!**



**Danville  
925-866-6164  
1901 Camino Ramon**

**San Mateo  
650-577-8979  
1888 S. Norfolk**

**Saratoga  
408-871-8890  
600 El Paseo de Saratoga**

**Mountain View  
650-964-7212  
141 El Camino Real**

**San Rafael  
415-456-2765  
863 E. Francisco**